

Parental controls guide

Android Tablet guide

Parental Controls information

Type of guide

Smartphones and other devices

Features and Benefits

Creating restricted profiles limits the access your children have to content on Android Tablets and restricts in-app purchasing.

What specific content can I restrict?



Apps Access



Browser Access



In App purchasing



Innapropriate content



Media streaming



Online games



Sharing Data



Sharing location



Social networking

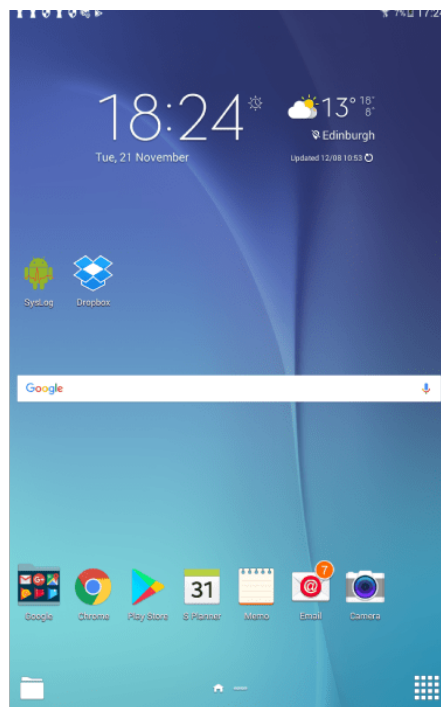
What do I need?

You will need your Google account email and password for the device

Android Tablet guide



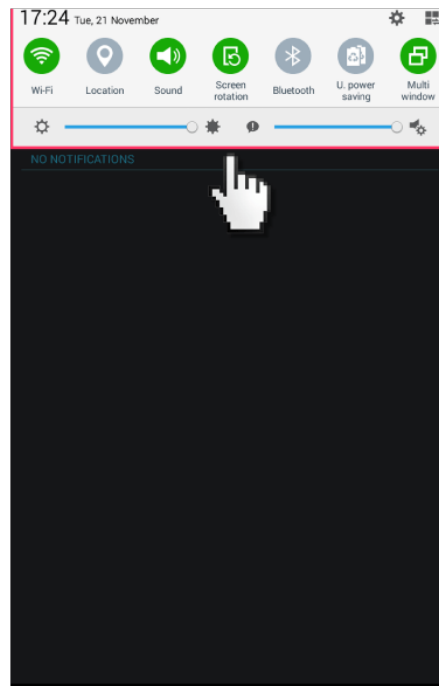
Go to the tablet home screen



Android Tablet guide



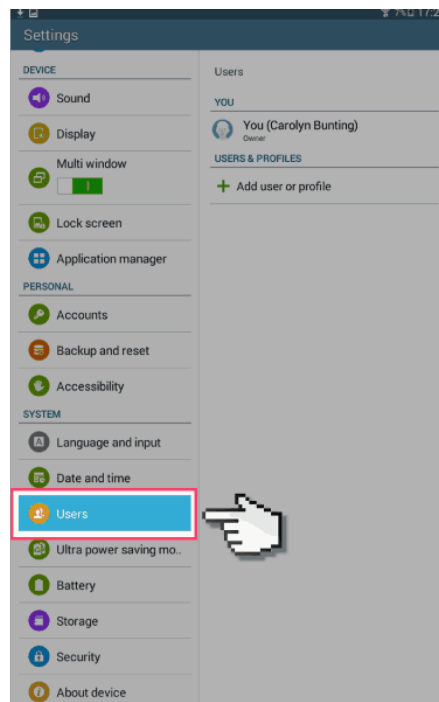
Swipe down from the top of the screen to see the settings panel. Select the cog icon in the top right corner to open the settings menu.



Android Tablet guide



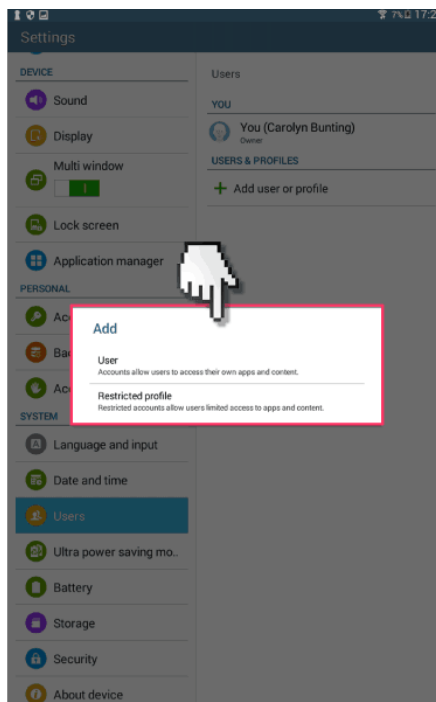
scroll down and select 'Users'.



Android Tablet guide



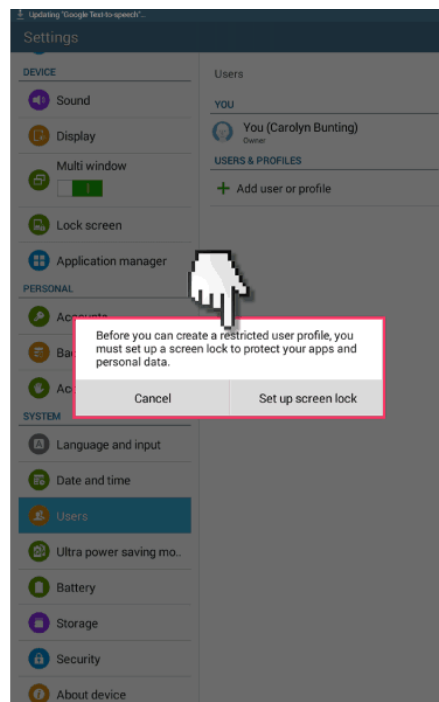
Add new 'Restricted User'



Android Tablet guide



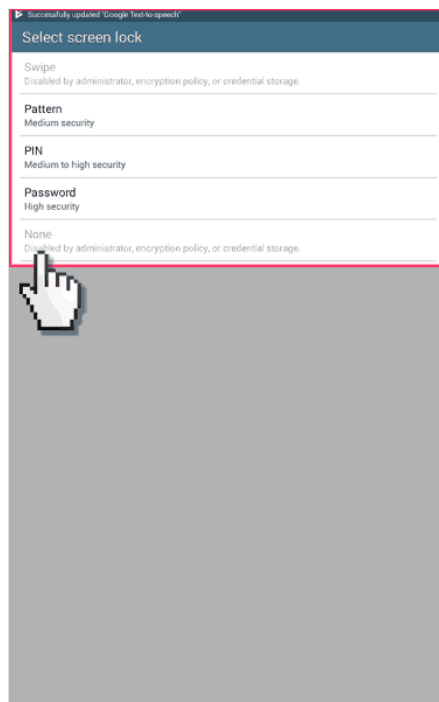
Next create a screen lock and password.



Android Tablet guide



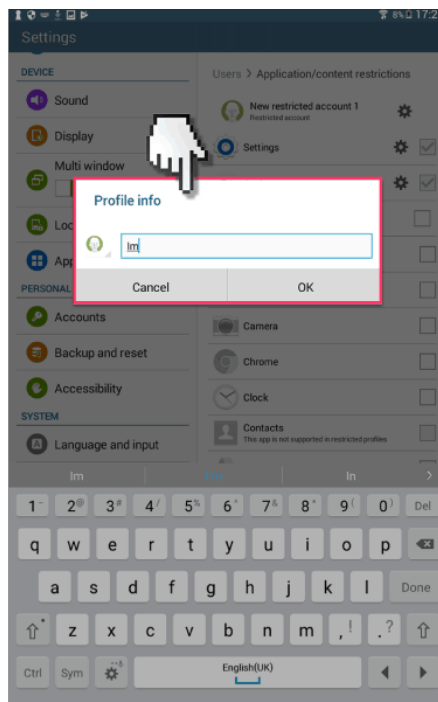
Select the password style.



Android Tablet guide

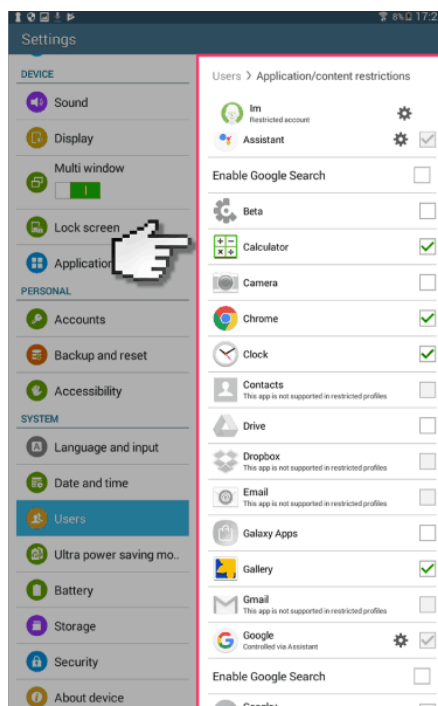


Next, choose the profile name.



Android Tablet guide

- Then once back in the users menu panel, select the new restricted user and select all the apps you want restricted access too.



Android Tablet guide



You'll now need a password every time you want to log into the unrestricted user so the child can't access restricted content.

